



**REGIONAL SPECIALISED METEOROLOGICAL CENTRE-TROPICAL CYCLONES, NEW DELHI  
TROPICAL CYCLONE ADVISORY No. 9**

**FROM: RSMC –TROPICAL CYCLONES, NEW DELHI**

**TO: STORM WARNING CENTRE, NAYPYI TAW (MYANMAR)  
STORM WARNING CENTRE, BANGKOK (THAILAND)  
STORM WARNING CENTRE, COLOMBO (SRILANKA)  
STORM WARNING CENTRE, DHAKA (BANGLADESH)  
STORM WARNING CENTRE, KARACHI (PAKISTAN)  
METEOROLOGICAL OFFICE, MALE (MALDIVES)  
OMAN METEOROLOGICAL DEPARTMENT, MUSCAT (THROUGH RTH JEDDAH)  
YEMEN METEOROLOGICAL SERVICES, REPUBLIC OF YEMEN (THROUGH RTH JEDDAH)  
NATIONAL CENTRE FOR METEOROLOGY, UAE (THROUGH RTH JEDDAH)  
PRESIDENCY OF METEOROLOGY AND ENVIRONMENT, SAUDI ARABIA (THROUGH RTH JEDDAH)  
IRAN METEOROLOGICAL ORGANISATION, (THROUGH RTH JEDDAH)  
QATAR METEOROLOGICAL DEPARTMENT (THROUGH RTH JEDDAH)**

**TROPICAL CYCLONE ADVISORY NO. 9 FOR NORTH INDIAN OCEAN (THE BAY OF BENGAL AND ARABIAN SEA) VALID FOR NEXT 120 HOURS ISSUED AT 1500 UTC OF 24.10.2022 BASED ON 1200 UTC OF 24.10.2022**

**SUB: CYCLONIC STORM “SITRANG” (PRONOUNCED AS “SI-TRANG”) OVER NORTH BAY OF BENGAL (CYCLONE WARNING FOR WEST BENGAL COAST: ORANGE MESSAGE)**

THE CYCLONIC STORM “SITRANG” PRONOUNCED AS “SI-TRANG” OVER NORTHWEST AND ADJOINING CENTRAL BAY OF BENGAL MOVED NORTH-NORTHEASTWARDS WITH A SPEED OF 28 KMPH DURING PAST 06 HOURS & LAY CENTERED AT 1200 UTC OF TODAY, THE 24<sup>TH</sup> OCTOBER OVER NORTH BAY OF BENGAL NEAR LATITUDE 20.7<sup>0</sup>N AND LONGITUDE 90.1<sup>0</sup>E, ABOUT 240 KM EAST-SOUTHEAST OF SAGAR ISLAND (42903) AND 230 KM SOUTH OF BARISAL (41950).

IT IS VERY LIKELY TO CONTINUE TO MOVE NORTH-NORTHEASTWARDS AND CROSS BANGLADESH COAST BETWEEN TINKONA ISLAND AND SANDWIP (41964) CLOSE TO BARISAL (41950) DURING 1800 UTC TO 2100 UTC OF 24<sup>TH</sup> OCTOBER, 2022.

FORECAST TRACK AND INTENSITY ARE GIVEN BELOW:

DATE/TIME(UTC)	POSITION (LAT. <sup>0</sup> N/ LONG. <sup>0</sup> E)	MAXIMUM SUSTAINED SURFACE WIND SPEED (KMPH)	CATEGORY OF CYCLONIC DISTURBANCE
24.10.22/1200	20.7/90.1	80-90 GUSTING TO 100	CYCLONIC STORM
24.10.22/1800	22.0/90.5	80-90 GUSTING TO 100	CYCLONIC STORM
25.10.22/0000	23.3/91.0	50-60 GUSTING TO 70	DEEP DEPRESSION
25.10.22/0600	24.6/91.6	45-55 GUSTING TO 65	DEPRESSION
25.10.22/1200	25.9/92.5	25-35 GUSTING TO 45	LOW PRESSURE AREA

INTENSITY OF THE SYSTEM IS CHARACTERISED AS T 3.0/3.0. THE CLOUDS ARE ORGANIZED IN SHEAR PATTERN. CLOUD MASS IS SHEARED TO THE NORTH OF THE SYSTEM CENTRE, OUTFLOW CLOUD BANDS WITH EMBEDDED ISOLATED INTENSE CONVECTION ARE SEEN OVER NORTH BANGLADESH AND NORTHEASTERN STATES OF INDIA. ASSOCIATED BROKEN LOW/MEDIUM CLOUD

WITH EMBEDDED INTENSE TO VERY INTENSE CONVECTIVE CLOUD OBSERVED OVER BAY OF BENGAL BETWEEN LATITUDE 20.5<sup>0</sup>N & 23.0<sup>0</sup>N AND LONGITUDE 88.0<sup>0</sup>E & 91.5<sup>0</sup>E.

Cloud distribution: (a) Isolated: <25%, Scattered:25-50%, Broken: 51-75%, Solid:>75%, Convection Intensity: (a) Weak: Cloud Top Temperature (CTT) >-25°C, (b) Moderate: CTT: - 25°C to -40°C, (c) Intense: CTT: - 41°C to -70°C and (d) Very Intense: : Less than -70°C  
PROBABILITY OF CYCLOGENESIS (FORMATION OF DEPRESSION):NIL: 0%, LOW: 1-33%, , MODERATE: 34-66% AND HIGH: 67-100%  
This is a guidance Bulletin for WMO/ESCAP Panel Member countries. Visit respective National websites for Country specific Bulletins

BANGLADESH, GANGETIC WEST BENGAL, TRIPURA AND MEGHALAYA. MINIMUM CLOUD TOP TEMPERATURE IS MINUS 93 DEGREE CELSIUS.

ASSOCIATED MAXIMUM SUSTAINED WIND SPEED (MSW) IS ABOUT 45 KNOTS GUSTING TO 55 KNOTS AROUND SYSTEM CENTER. ESTIMATED CENTRAL PRESSURE IS 995 HPA. SEA CONDITION IS LIKELY TO BE HIGH OVER NORTH & ADJOINING CENTRAL BAY OF BENGAL.

**STORM SURGE WARNING:**

- (I) TIDAL WAVE OF ABOUT 2.0 M HEIGHT ABOVE ASTRONOMICAL TIDE IS LIKELY TO INUNDATE LOW LYING AREAS OF BANGLADESH COAST NEAR THE LANDFALL AREA DURING NEXT 06 HOURS AND DECREASE THEREAFTER.
- (II) TIDAL WAVE OF ABOUT 0.5 TO 1.0 M HEIGHT ABOVE ASTRONOMICAL TIDE IS LIKELY TO INUNDATE LOW LYING AREAS OF WEST BENGAL (NORTH & SOUTH 24 PARGANAS) DURING NEXT 06 HOURS AND DECREASE THEREAFTER.

**REMARKS:**

THE MADDEN JULIAN OSCILLATION INDEX (MJO) CURRENTLY LIES IN PHASE 6 WITH AMPLITUDE GREATER THAN 1. IT WOULD CONTINUE IN SAME PHASE DURING NEXT 5 DAYS WITH GRADUALLY INCREASING AMPLITUDE.

SEA SURFACE TEMPERATURE (SST) IS AROUND 29-30°C OVER NORTH CENTRAL & BAY OF BENGAL. THE OCEAN HEAT CONTENT (OHC) IS AROUND 80-90 KJ/CM<sup>2</sup> OVER THE SAME REGION. LOW LEVEL VORTICITY HAS INCREASED AND IS ABOUT 250 X10<sup>-6</sup> S<sup>-1</sup> TO THE NORTH-NORTHEAST OF SYSTEM CENTRE. VERTICALLY IT IS EXTENDING UPTO 200 HPA LEVEL. LOW LEVEL CONVERGENCE IS AROUND 30 X10<sup>-5</sup> S<sup>-1</sup> TO THE NORTHEAST OF SYSTEM CENTRE. UPPER LEVEL DIVERGENCE IS AROUND 40 X10<sup>-5</sup> S<sup>-1</sup> TO THE NORTHEAST OF SYSTEM CENTRE. STRONG POLEWARD AND EQUATORWARD OUTFLOW IS SEEN IN UPPER LEVELS AS EXHIBITED IN SATELLITE IMAGERY. TOTAL PRECIPITABLE WATER IMAGERY INDICATES WARM MOIST AIR INCURSION INTO THE CORE OF THE SYSTEM. WIND SHEAR IS MODERATE (15-20 KNOTS) AROUND THE SYSTEM CENTER AND IS HIGH (20-30 KNOT) TO THE NORTH OF THE SYSTEM ALONG THE PREDICTED TRACK.

A TROUGH IN MID-LATITUDE WESTERLIES IS ROUGHLY RUNNING ALONG 85°E UPTO 20°N. THE SYSTEM CONTINUED TO MOVE NORTH-NORTHEASTWARDS UNDER THE INFLUENCE OF THE TROUGH IN MID-LATITUDE WESTERLIES IN MIDDLE AND UPPER TROPOSPHERIC LEVELS, THE ANTI CYCLONE TO THE EAST OF THE SYSTEM CENTRE OVER MYANMAR AND THE SOUTH-SOUTHWESTERLY WINDS TO THE NORTH OF RIDGE ALONG 19°N.

THE MODELS ARE ALSO INDICATING NORTH-NORTHEASTWARD MOVEMENT OF THE SYSTEM AND CROSSING OVER BANGLADESH COAST NEAR 22.0N/90E DURING 1800 UTC TO 2100 UTC OF 24<sup>TH</sup> OCTOBER, 2022.

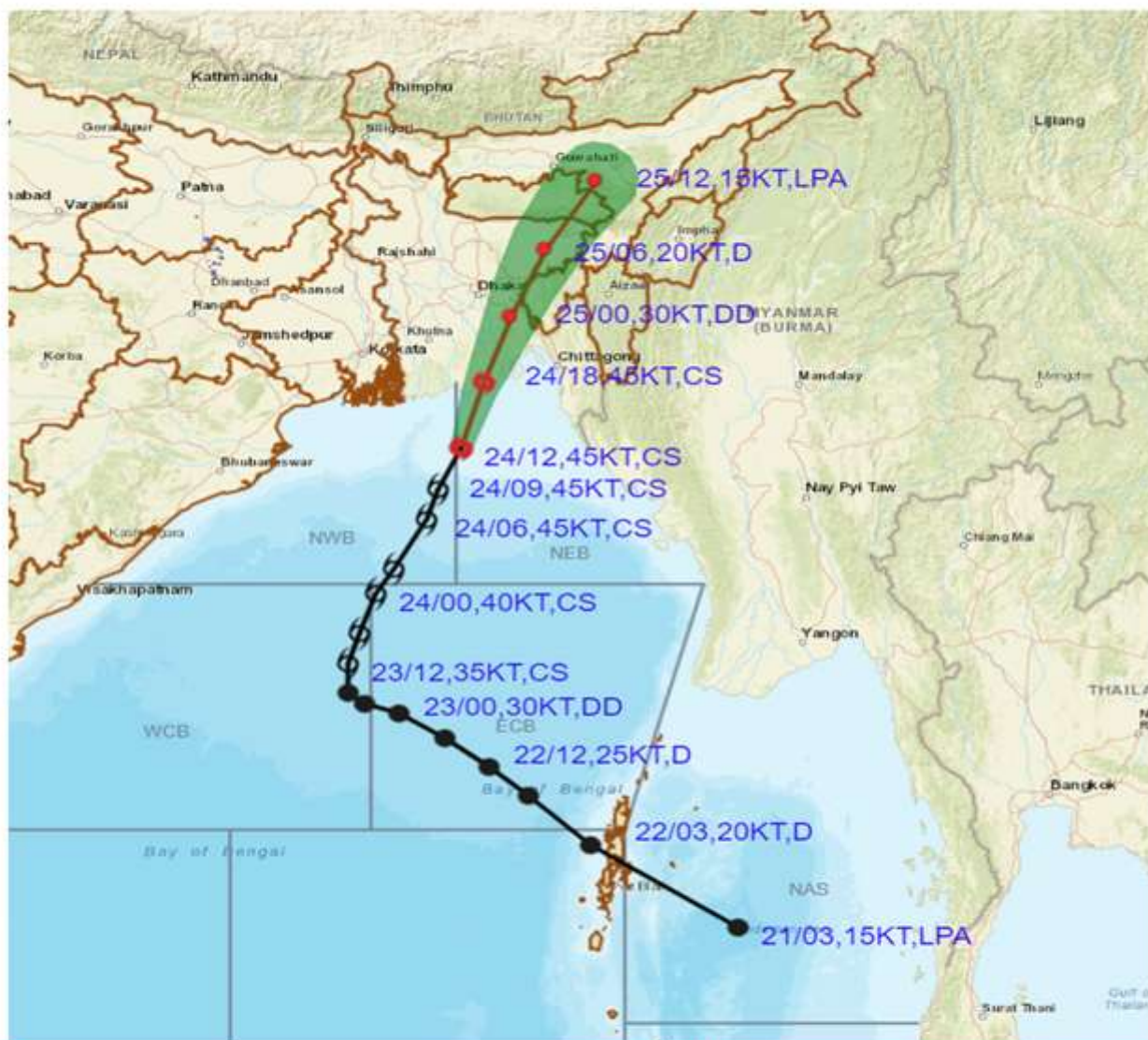
CONSIDERING ALL THE ABOVE, THE **CYCLONIC STORM "SITRANG"** IS VERY LIKELY TO CONTINUE TO MOVE NORTH-NORTHEASTWARDS AND CROSS BANGLADESH COAST BETWEEN TINKONA ISLAND AND SANDWIP CLOSE TO BARISAL (41950) DURING 1800 UTC TO 2100 UTC OF 24<sup>TH</sup> OCTOBER, 2022.

NEXT BULLETIN WILL BE ISSUED AT 1700 UTC OF 24<sup>TH</sup> OCTOBER 2022.

(RK JENAMANI)  
SCIENTIST-F  
RSMC NEW DELHI



**OBSERVED AND FORECAST TRACK ALONGWITH CONE OF UNCERTAINTY OF CYCLONIC STORM SITRANG OVER NORTHWEST AND ADJOINING NORTHEAST BAY OF BENGAL BASED ON 1200 UTC OF 24<sup>th</sup> OCTOBER, 2022**



DATE/TIME IN UTC

IST=UTC + 0530

L: LOW PRESSURE AREA

WML: WELL MARKED LOW PRESSURE AREA

D: DEPRESSION (17-27 KT)

DD: DEEP DEPRESSION (28-33 KT)

CS: CYCLONIC STORM (34-47 KT)

SCS: SEVERE CYCLONIC STORM (48-63KT)

VSCS: VERY SEVERE CYCLONIC STORM (64-89 KT)

ESCS: EXTREMELY SEVERE CYCLONIC STORM (90-119 KT)

SuCS: SUPER CYCLONIC STORM ( $\geq$  120 KT)

● LESS THAN 34 KT

⊖ 34-47 KT

⊕  $\geq$  48 KT

— OBSERVED TRACK

— FORECAST TRACK

▲ CONE OF UNCERTAINTY





**OBSERVED AND FORECAST TRACK ALONGWITH QUADRANT WIND DISTRIBUTION OF CYCLONIC STORM SITRANG OVER NORTHWEST AND ADJOINING NORTHEAST BAY OF BENGAL BASED ON 1200 UTC OF 24<sup>th</sup> OCTOBER, 2022**



DATE/TIME IN UTC  
 IST=UTC + 0530  
 L: LOW PRESSURE AREA  
 WML: WELL MARKED LOW PRESSURE AREA  
 D: DEPRESSION (17-27 KT)  
 DD: DEEP DEPRESSION (28-33 KT)  
 CS: CYCLONIC STORM (34-47 KT)  
 SCS: SEVERE CYCLONIC STORM (48-63KT)  
 VSCS: VERY SEVERE CYCLONIC STORM (64-89 KT)  
 ESCS: EXTREMELY SEVERE CYCLONIC STORM (90-119 KT)  
 SuCS: SUPER CYCLONIC STORM (≥20 KT)

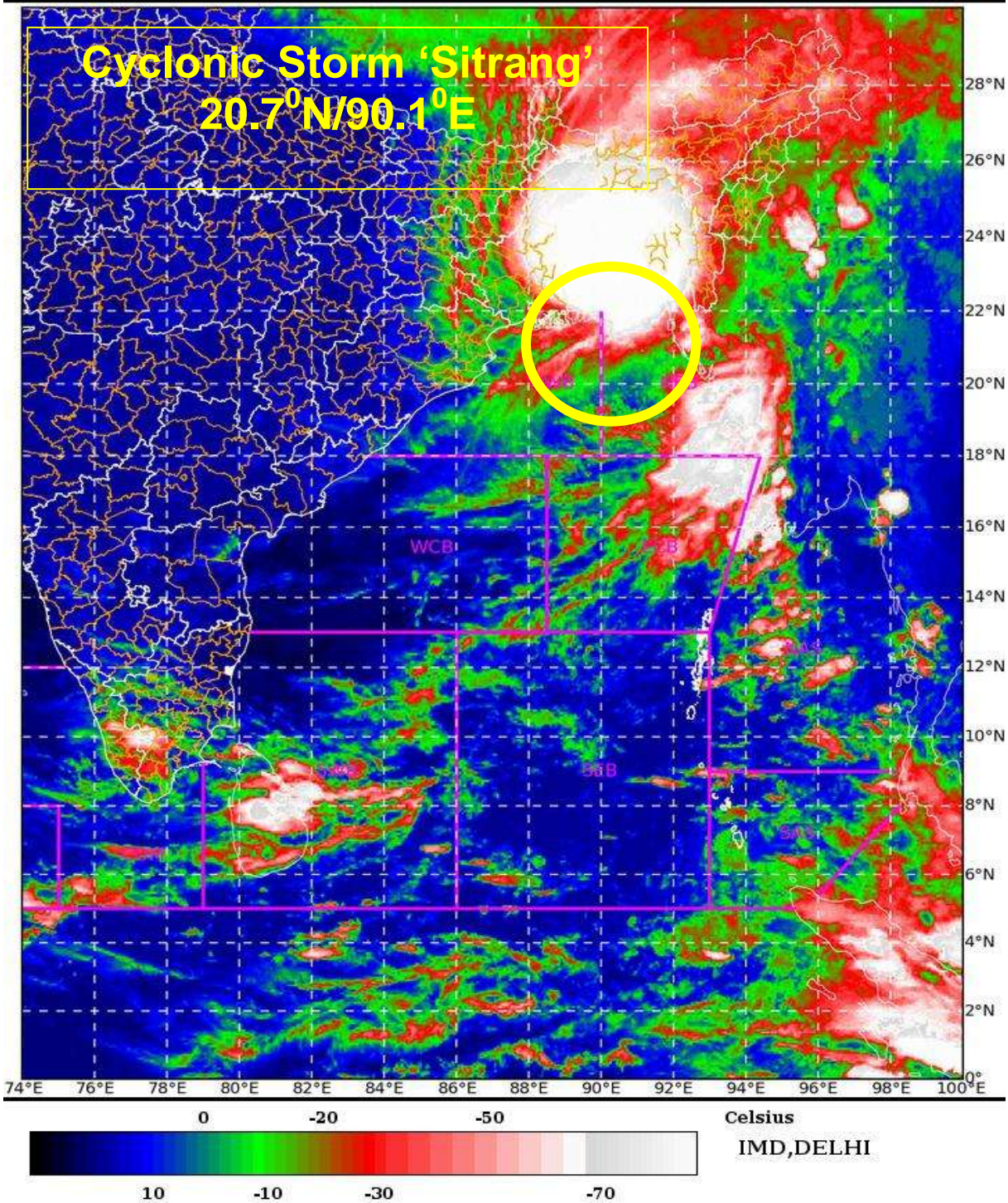
● LESS THAN 34 KT  
 ○ 34-47 KT  
 ● ≥ 48 KT  
 — OBSERVED TRACK  
 — FORECAST TRACK  
 — CONE OF UNCERTAINTY  
 AREA OF MAXIMUM SUSTAINED WIND SPEED:  
 28-33 KT (52-61 KMPH)  
 34-49 KT (62-91 KMPH)  
 50-63 KT (92-117 KMPH)  
 ≥ 64 KT (≥118 KMPH)

**IMPACT OVER THE SEA**

MSW (knot/kmph)	Impact	Action
28-33 (52-61)	Very rough seas	Total suspension of fishing operations
34-49 (62-91)	High to very high seas	Total suspension of fishing operations
50-63 (92-117)	Very high seas	Total suspension of fishing operations
≥ 64 (≥118)	Phenomenal	Total suspension of fishing operations

Cloud distribution: (a) Isolated: <25%, Scattered:25-50%, Broken: 51-75%, Solid:>75%, Convection Intensity: (a) Weak: Cloud Top Temperature (CTT) >-25°C, (b) Moderate: CTT: - 25°C to -40°C, (c) Intense: CTT: - 41°C to -70°C and (d) Very Intense: : Less than -70°C  
 PROBABILITY OF CYCLOGENESIS (FORMATION OF DEPRESSION):NIL: 0%, LOW: 1-33%, , MODERATE: 34-66% AND HIGH: 67-100%  
 This is a guidance Bulletin for WMO/ESCAP Panel Member countries. Visit respective National websites for Country specific Bulletins





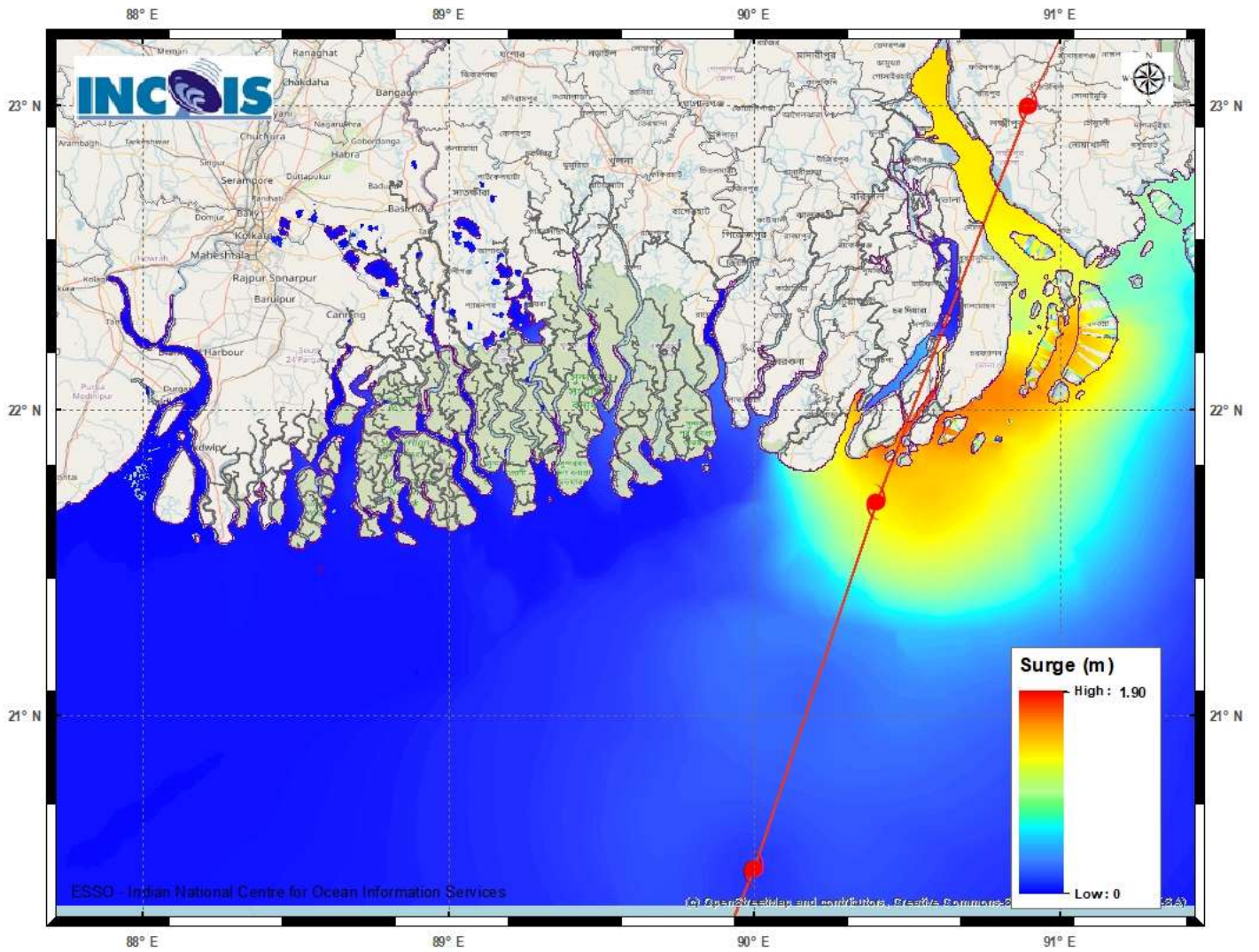


## Fishermen warning graphics



	Squally WX with wind speed 40-45 kmph gusting to 55 kmph
	Squally WX with wind speed 45-55 kmph gusting to 65 kmph
	Squally wind speed with wind speed 45-55 kmph gusting to 65 kmph
	Squally wind speed with wind speed 55-65 kmph gusting to 75 kmph
	Gale wind speed with wind speed 65-75 kmph gusting to 85 kmph
	Gale wind speed with wind speed 80-90 kmph gusting to 100 kmph
	Gale wind speed with wind speed 90-100 kmph gusting to 110 kmph

Fishermen are advised not to venture into the marked areas.



## Storm Surge Warning Graphics

Cloud distribution: (a) Isolated: <25%, Scattered:25-50%, Broken: 51-75%, Solid:>75%, Convection Intensity: (a) Weak: Cloud Top Temperature (CTT) >-25°C, (b) Moderate: CTT: - 25°C to -40°C, (c) Intense: CTT: - 41°C to -70°C and (d) Very Intense: : Less than -70°C  
 PROBABILITY OF CYCLOGENESIS (FORMATION OF DEPRESSION):NIL: 0%, LOW: 1-33%, , MODERATE: 34-66% AND HIGH: 67-100%  
 This is a guidance Bulletin for WMO/ESCAP Panel Member countries. Visit respective National websites for Country specific Bulletins